



# Elite Pro Series

## Portable Hot Water Handwashing Sink

WITH ITS STAINLESS STEEL CABINET AND millwork doors, our **Elite Pro Series** stands out from the competition in areas of quality and affordability. Standard door colors include solid white, solid black or white doors with black edge trim. The stainless steel splash guard on the **Elite Pro 1** includes a top filled liquid soap dispenser and M-fold paper towel compliance applications.



# ELITE PRO 1

# Elite Pro 1



Stainless Countertop and Splash Guard / Single Stainless Basin

## Indoor or Covered Applications

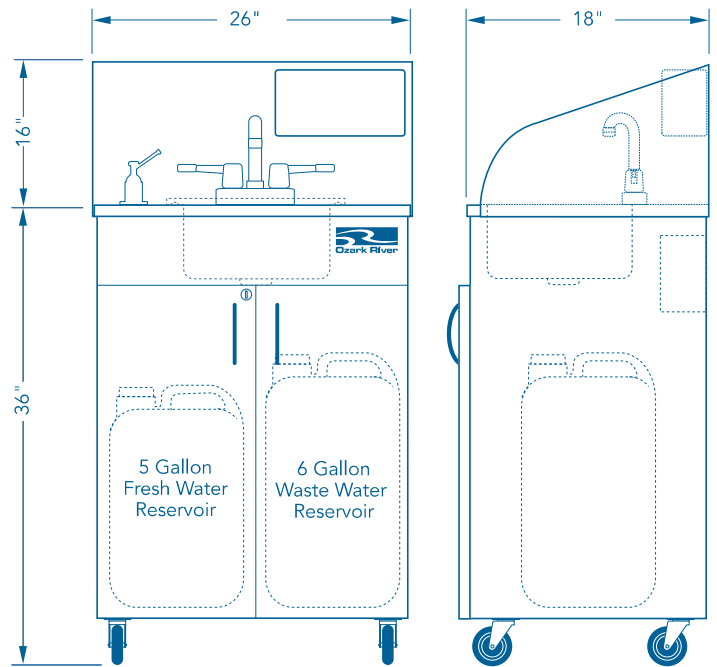
- Food Vendors
- Hospitality
- Patio Food and Beverage Serving
- Personal Covered Decks and Garages
- Catering Events
- Mobile Trailers
- County Fairs
- Covered Playgrounds
- Waitress Stations
- Trade Shows, etc.

Model		List Price
<b>Single Compartment Basin</b>		
ESPRWK-SS-SS1N	White Doors With Black Trim	\$2,744 <sup>25</sup>
ESPRWW-SS-SS1N	White Doors With White Trim	
ESPRKK-SS-SS1N	Black Doors With Black Trim	

Specifications	
Model Name	Elite Pro 1
NSF Certified	Yes
SACERS Rating	12, 3.4, 5.1, 5.2
Electrical Requirements	110V, 20A Dedicated Outlet and Breaker
Product Dimensions	26" W x 18" D x 52" H
Product Weight	108 lbs.
On-Demand Hot Water	Approx. 40°F Above Fresh Water Temperature
Fresh Water Tank	5 Gallon Capacity, FDA Approval
Waste Water Tank	6 Gallon Capacity, FDA Approval
Approx Handwashings	42 qty. 15-Second Handwashings
GPM	0.50
Basins Style	Single
Basin Material	Stainless Steel
Basin Dimensions	12" W x 10" L x 5.75" D
Faucet Style	ADA Compliant Handles, Goose Neck Spout
Countertop Material	Stainless Steel
Cabinet Material	Stainless Steel
Cabinet Wheels	Standard 3" Front Locking/Swivel
Door Colors	White/Black, White/White, Black/Black
Door Material	Phthalate, Lead Free Millwork / PVC Edging
Door Lock	Keyless
Towel Dispenser	ABS Material, M-Fold Towels
Soap Dispenser	Liquid Only, Countertop Mount
Warranty	2 Year (see warranty for details)

Minimum Operating Requirements	
Each sink must use a grounded, dedicated 110V, 20A circuit breaker	
Sinks must be used on a dry, level indoor surface	
Extension cord must be 12/3, rated at 20A or higher	
Water must meet EPA standards (PH between 7.0 and 9.0)	

Designs, availability, colors, specifications, dimensions and models are subject to change without notice.  
©2018 Integrity Distribution LLC - Date: 03/06/2018



5" Xtra-Duty Caster Upgrade



Quick Connect Tank



### IMPORTANT:

Consult with your state and local environmental health official to confirm usage of portable sinks in place of plumbing.

# Handwashing Compliance

## Ozark River is the Standard

### NSF® CERTIFICATION

NSF® Certification is a key factor separating Ozark River Portable Sinks® from its competitors. NSF® is the most recognized sanitation standard in many industries. Certification is critical to help ensure Ozark River Portable Sinks® complies with most state and local handwashing codes.



### SACERS RATING

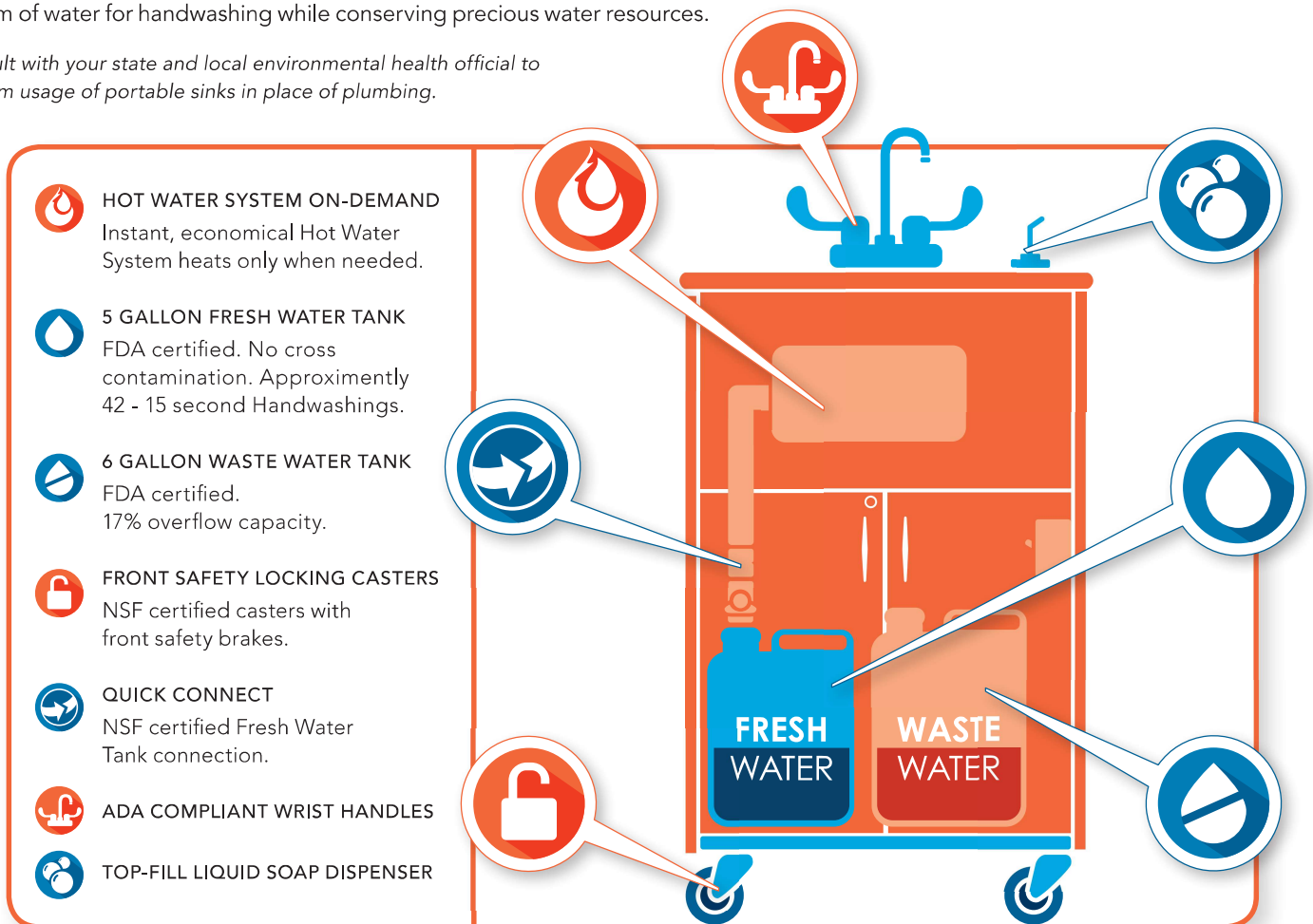
SACERS provides an easy to use resource for defining high-quality care and assessing levels of quality in child care programs. Ozark River Portable Sinks directly affect SACERS, increasing the rating.

**SACERS Rating: 12 - 3.4 - 5.1 - 5.2**

### ENERGY AND WATER SAVINGS

Our reliable, instant hot water system uses a minimal amount of energy to heat the water. No preheating of water is required. Sinks also dispense a sensible 1/2 gallon of water per minute (GPM), providing a perfect, economical stream of water for handwashing while conserving precious water resources.

*Consult with your state and local environmental health official to confirm usage of portable sinks in place of plumbing.*



**HOT WATER SYSTEM ON-DEMAND**  
Instant, economical Hot Water System heats only when needed.

**5 GALLON FRESH WATER TANK**  
FDA certified. No cross contamination. Approximately 42 - 15 second Handwashings.

**6 GALLON WASTE WATER TANK**  
FDA certified. 17% overflow capacity.

**FRONT SAFETY LOCKING CASTERS**  
NSF certified casters with front safety brakes.

**QUICK CONNECT**  
NSF certified Fresh Water Tank connection.

**ADA COMPLIANT WRIST HANDLES**

**TOP-FILL LIQUID SOAP DISPENSER**